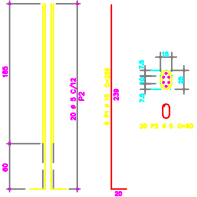
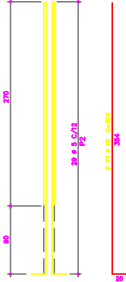


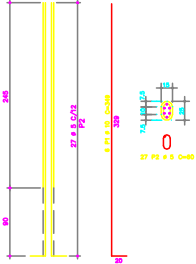
P1=P2 (x2)



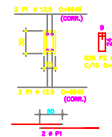
P3=P4 (x2)



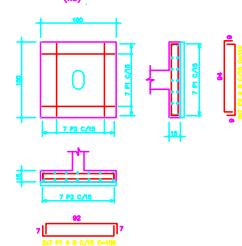
P5



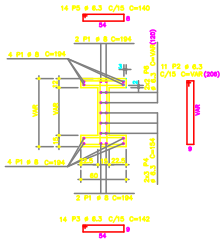
C1aC8



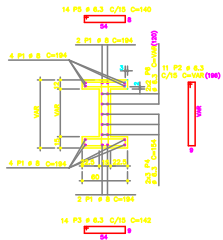
St1a5 (x3)



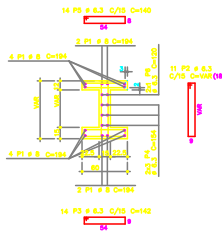
BANCO 01



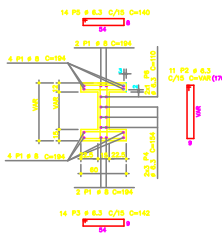
BANCO 02



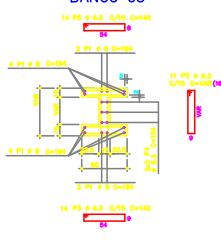
BANCO 03



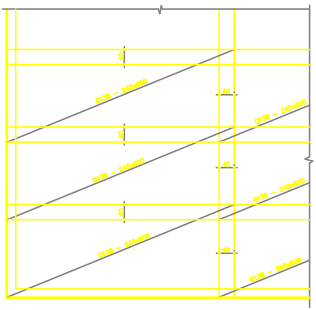
BANCO 04



BANCO 05

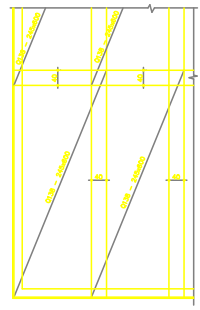


ARMAÇÃO POSITIVA

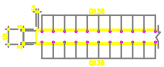


RADIER

ARMAÇÃO NEGATIVA



DETALHE DO RADIER



CONSUMO DE FERROS PARA A LAJE

ARMAÇÃO NEGATIVA 52 PAINES Q138 - 1.682 Kg
ARMAÇÃO POSITIVA 52 PAINES Q138 - 1.682 Kg

BANCO	DI	QUANT	COMP	DE	QTD
(mm)	(mm)	(mm)	(mm)	(mm)	(mm)
BANCO 01	14	16	14	16	14
BANCO 02	14	16	14	16	14
BANCO 03	14	16	14	16	14
BANCO 04	14	16	14	16	14
BANCO 05	14	16	14	16	14

ITEM	QUANT	UNID	VALOR	TOTAL
1	1	m	100	100
2	1	m	100	100
3	1	m	100	100
4	1	m	100	100
5	1	m	100	100

REVISÃO	DESCRIÇÃO	SOLUCIONADO POR	DATA	RESPONSÁVEL

TAUFIG ASFURA
Cada. Med. - 1/20

GAMAL ASFURA
Cada. Med. - 1/20



RUA ARRAUDA BARROS, 571 - 5TO. ANEXO - RECIFE-PE - CEP: 51.040-130.
FONE: (51) 3222-4862 - FAX: 3237-2890 - E-MAIL: gerald@taufig.com.br

OBRA PROJETADA PARA CONSTRUÇÃO DE UM PARQUE (CARRILHO)

FECH.	TIPO	ESCALA
67/2019	CONCRETO	1:50
67/2019	ESTRUTURAL	1:50
67/2019	REBARBA	1:50
67/2019	REBARBA	1:50

P 07B

ACADEMIA DA CIDADE - ARMAÇÃO